

## LEGNI TINTI | STAINED WOODS



**RV.SB.25**  
Frassino sbiancato  
Bleached ash



**RV.T.24**  
Tabacco  
Tobacco



**RV.G.39**  
Rovere grigio  
Grey ash



**RV.NC.22**  
Noce canaletto  
Canaletto walnut



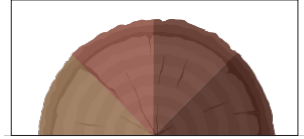
**RV.Q.73**  
Frassino quercia  
Oak ash



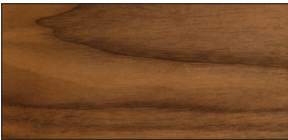
**RV.B.71**  
Frassino bruciato  
Burnt ash



**RV.M.27**  
Frassino miele  
Honey ash

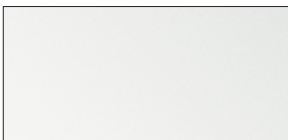


**Tinta a campione**  
Sample dyed

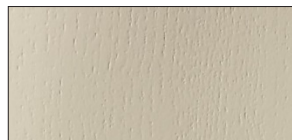


**N.26**  
Noce americano  
American walnut

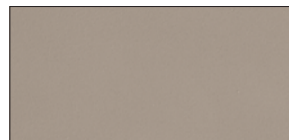
## LEGNI LACCATI | LACQUERED WOODS



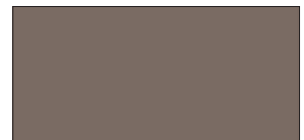
**Bianco / White**  
**RV.B.35 Poro aperto**  
(open pore)  
**B.118 Opaco** (opaque)  
**B.L.120 Lucido** (glossy)



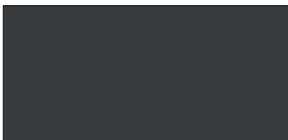
**Sabbia / Sand**  
**RV.S.134 Poro aperto**  
(open pore)  
**S.234 Opaco** (opaque)  
**S.L.334 Lucido** (glossy)



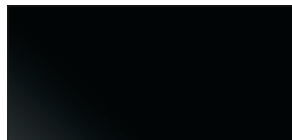
**Corda / Rope**  
**RV.C.137 Poro aperto**  
(open pore)  
**C.237 Opaco** (opaque)  
**C.L.337 Lucido** (glossy)



**Fango / Mud**  
**RV.F.136 Poro aperto**  
(open pore)  
**F.236 Opaco** (opaque)  
**F.L.336 Lucido** (glossy)



**Antracite / Anthracite**  
**RV.A.138 Poro aperto**  
(open pore)  
**A.238 Opaco** (opaque)  
**A.L.338 Lucido** (glossy)



**Nero / Black**  
**RV.N.117 Poro aperto**  
(open pore)  
**N.217 Opaco** (opaque)



**Laccato a campione**  
**(scala RAL)**  
Sample lacquered  
(scale RAL)

I toni dei campioni sono da considerarsi indicativi / Sample colours are considered indicative

PER LA SCELTA DELLE FINITURE LEGGERE LE DESCRIZIONI INDICATE NEL DETTAGLIO PRODOTTO DI OGNI ARTICOLO.

## METALLI EPOXY / METALS EPOXY



**B.O.206**  
**Bianco opaco** / Opaque white



**M.C.237**  
**Corda opaco** / Opaque rope



**M.A.248**  
**Antracite opaco** / Opaque anthracite



**Multicolor**  
**Bianco, corda, fango, antracite** /  
White, rope, mud, anthracite



**A.S.203 (verniciato)**  
**Acciaio satinato** /  
Satinized steel



**205 Cromo** (bagno galvanico)  
**Cromato** /  
Chrome

I toni dei campioni sono da considerarsi indicativi / Sample colours are considered indicative

## SPECIFICHE TECNICHE / TECHNICAL SPECIFICATIONS

**FINITURE EPOXY (bianco, corda, antracite, multicolor, acciaio satinato)**  
Gli elementi in metallo verniciati a polveri epossidiche vengono passati in forno a 180° per conferire al prodotto elevata durezza.

**EPOXY FINISHES (white, rope, anthracite, multicolor, satinized steel)**  
The metal elements painted with epoxy powders are passed in the oven at 180 ° to give the product high hardness.

PER LA SCELTA DELLE FINITURE LEGGERE LE DESCRIZIONI INDICATE NEL DETTAGLIO PRODOTTO DI OGNI ARTICOLO.